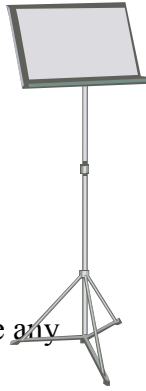


Musical Opportunities for Fall

Praise Choir

Love to sing? Consider joining Praise Choir, RLC's Choir for adults and older teens. We meet Wednesday evenings right after WoW! (7:20-8:15 p.m.) and sing about twice a month at alternate services on Sunday mornings. The first practice was Wednesday, September 7, 2011. If you have any questions or want more information, feel free to contact Jeanne Bruns, director at 356-1067 or jmbruns@midco.net



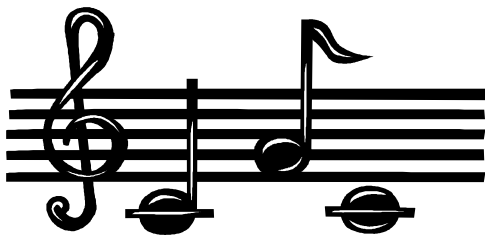
Worship Team

Resurrection's worship team leads the music on Sunday mornings at the 11:00 a.m. service. Practices are as needed and are typically held Sunday mornings before the service. Interested? Please contact Jeanne Bruns at 356-1067 or jmbruns@midco.net. Both vocalists and instrumentalists are encouraged to consider this opportunity. Fall season started September 11, 2011.



WoW! Worship Team

If you are a Wednesday worship attendee and enjoy singing or playing an instrument, WoW! Worship team may be for you! Practices are Wednesday's before worship as needed. Our fall season began September 14, 2011. Let Jeanne Bruns know if you are interested or have any questions (356-1067 or jmbruns@midco.net).



Promise Choir

Hey everyone! Promise Choir is just around the corner! We are so excited! Promise Choir is open to all children from 2nd—6th grade. It began on

Wednesday, September 21, 2011 at 7:20 p.m. We meet in the church library. We will share our gift of song at worship on Sunday about once a month, so get ready to make a joyful noise to the Lord!

If you have any questions, please talk to Kathy Kuebelbeck (363-4380) or Gwen Kranz (320-352-6655).



Arlington Place Sing-a-Long

You are invited to join us as we spend time with the folks at Arlington Place in St. Joseph for a Sing-a-Long on once a month on Thursday from 6:30-7:30 p.m. Music sheets are provided. If you have any questions, contact Lisa Wallin at 363-1056. The residents at Arlington Place really enjoy the time we spend with them. Unfortunately this ministry will not be able to continue unless we have more people sharing their gifts with those at Arlington.